

Sublette County Child Care Needs Survey

November 2007

Prepared for the Sublette Community Partnership

PREPARED BY:
Jeffrey Jacquet
Socioeconomic Analyst
Sublette Community Partnership
Jeffrey.jacquet@gmail.com
www.sublette-se.org
307-231-2472

Table of Contents

Executive Summary:	3
Table of Responses and Children Represented by Location	
Table of Needs and Future Needs by Location.....	4

Big Piney/La Barge:

A NOTE ON THE METHODOLOGY:.....	5
GENERAL FINDINGS:.....	6
Need for After-School and Summer Programming:.....	6
Day Care	6
DAY CARE.....	7
Comments on Day Care:.....	9
AFTER SCHOOL	10
SUMMER SCHOOL	13
Comments on the Summer Programming:.....	15

Pinedale:

A NOTE ON THE METHODOLOGY:.....	16
GENERAL FINDINGS:.....	17
Continuing Need:.....	17
More Diversity:	17
Satisfied with Quality, but not Quantity:.....	18
DAY CARE.....	19
Comments On Day Care:.....	21
AFTER SCHOOL	25
Comments:	27
SUMMER SCHOOL	28
Comments on Summer Programming:	30

Executive Summary:

- ▶ In terms of county-wide needs, the need for Summer youth programs was most prevalent among all respondents.
- ▶ While Summer youth programming was the greatest need in Pinedale in terms of numbers of children represented by the survey, the lack of Day Care appeared to be a more serious concern from Pinedale-area respondents. The levels of dissatisfaction, number of waiting lists, and the tone of comments received suggested day care was the greatest need at the moment in this area.
- ▶ In the Big Piney/La Barge area, After-School and Summer programs appeared to be the greatest need in terms of numbers of children as well as tone of comments received, and etc. After-School was a daily need for the majority of parents, while the need for summer programs was much more varied. Day care was also a need for some parents, however the percentage was much smaller and about 60% of these parents indicated these needs were currently being met. The majority of Day Care needs came from La Barge, even though the number of overall responses was smaller, suggesting a much greater need in La Barge for day care.
- ▶ The level of response overall was also greater in the Pinedale area, which suggests that the needs for child care are more serious.
- ▶ All areas had a number of respondents who needed weekend/odd-hours care for day care and other programs. The numbers of these respondents was greater in Pinedale.

About the Survey:

This survey was distributed to all elementary parents in Pinedale in Spring of 2007, and Big Piney and La Barge in the Fall of 2007, as well as to area day care providers. The number of responses is as follows below. The surveys provide a sampling of child care priorities among parents and an minimum indication of participation in such child care programs.

Number of Responses and Children Represented by Location

Location	Number of Surveys	Children Represented
All Locations	167	318
Pinedale	119	226
Big Piney/La Barge	48	95
Big Piney Only	33	59
La Barge Only	15	32

Current and Future Needs By Area

All Locations

Current Need			Future Need		
Program	Children	% of all Children	Program	Children	% of all Children
Day Care	122	38.01%	Day Care	8	2.49%
After School	124	38.63%	After School	69	21.50%
Summer Program	159	49.53%	Summer Program	46	14.33%

Pinedale

Current Need			Future Need		
Program	Children	% of all Children	Program	Children	% of all Children
Day Care	92	40.71%	Day Care	7	3.10%
After School	71	31.42%	After School	51	22.57%
Summer Program	118	52.21%	Summer Program	33	14.60%

Big Piney/La Barge

Current Need			Future Need		
Program	Children	% of all Children	Program	Children	% of all Children
Day Care	30	31.58%	Day Care	1	1.05%
After School	53	55.79%	After School	18	18.95%
Summer Program	41	43.16%	Summer Program	13	13.68%

Big Piney Only

Current Need			Future Need		
Program	Children	% of all Children	Program	Children	% of all Children
Day Care	17	28.81%	Day Care	0	0.00%
After School	32	54.24%	After School	12	20.34%
Summer Program	30	50.85%	Summer Program	9	15.25%

La Barge Only

Current Need			Future Need		
Program	Children	% of all Children	Program	Children	% of all Children
Day Care	13	40.63%	Day Care	1	3.13%
After School	21	65.63%	After School	6	18.75%
Summer Program	11	34.38%	Summer Program	4	12.50%

● SUBLETTE COUNTY CHILD CARE SURVEY ● -BIG PINEY/LA BARGE-

A NOTE ON THE METHODOLOGY:

Surveys were distributed to all of the child care providers in the county, as well as distributed via the Big Piney and La Barge elementary schools of Sublette School District #9 on October 1st.

As of October 23, 2007, 48 surveys have been returned from the elementary schools, representing 95 children. 59 Children were represented from Big Piney and 36 from La Barge The average age of the children was 6.4 years old. Only a small handful of returned surveys indicated no need for any of the programs, and so were not included in the results. While the results cannot provide a picture of what percentage of the total population requires child care, the results are likely to be representative of what types, times, and prices are needed across all children requiring care.

About 15 respondents wrote additional comments on the surveys.

GENERAL FINDINGS:

Need for After-School and Summer Programming:

The results showed a need for After-School and Summer Time programming. 55% of the children represented by the survey have a current need for After-school programs, and 43% indicated a need for Summer School. Many of the comments that were received expressed a strong need for school and summer school activities. There are currently very few limited programs that offer after-school activities to youth, and these needs have not been met.

Parents indicated that Day-Care and After-School care was a daily or almost daily requirement, while Summer-School programming was somewhat more infrequent and with varying drop-off and pick-up times.

Day Care:

Unlike the Pinedale Survey, the need for more day care providers did not appear to be an overwhelming concern among respondents. However 30 were indicated to have a need for Day-Care, and 12 of these 30 indicated that these needs were currently not being met. The respondents who could not find child care primarily had infants or were located in La Barge. La Barge appears to have a larger need for Day-Care providers. A few respondents indicated a need for more weekend/odd-hours care options as well.

Big Piney/ Labarge

<u>Current Need</u>			<u>Future Need</u>		
<u>Program</u>	<u>Children</u>	<u>% of all Children</u>	<u>Program</u>	<u>Children</u>	<u>% of all Children</u>
Day Care	30	31.58%	Day Care	1	1.05%
After School	53	55.79%	After School	18	18.95%
Summer Program	41	43.16%	Summer Program	13	13.68%

Big Piney Only

<u>Current Need</u>			<u>Future Need</u>		
<u>Program</u>	<u>Children</u>	<u>% of all Children</u>	<u>Program</u>	<u>Children</u>	<u>% of all Children</u>
Day Care	17	28.81%	Day Care	0	0.00%
After School	32	54.24%	After School	12	20.34%
Summer Program	30	50.85%	Summer Program	9	15.25%

La Barge Only

<u>Current Need</u>			<u>Future Need</u>		
<u>Program</u>	<u>Children</u>	<u>% of all Children</u>	<u>Program</u>	<u>Children</u>	<u>% of all Children</u>
Day Care	13	40.63%	Day Care	1	3.13%
After School	21	65.63%	After School	6	18.75%
Summer Program	11	34.38%	Summer Program	4	12.50%

●DAY CARE●

How Many:

30 children were marked as having a need for day care at the present time, or about 31% of all the children represented by the survey effort. Two children were listed as needing childcare in the future. The average age of these children is 2.1 years old. There were 6 children under 1 year old, (with the youngest being unborn) that were marked as needing daycare, as well as 4 children marked as one years old and currently needing care. There were 2 5year old children and a 6 year old child listed as needing childcare. The rest of the children were between 2 and 4.

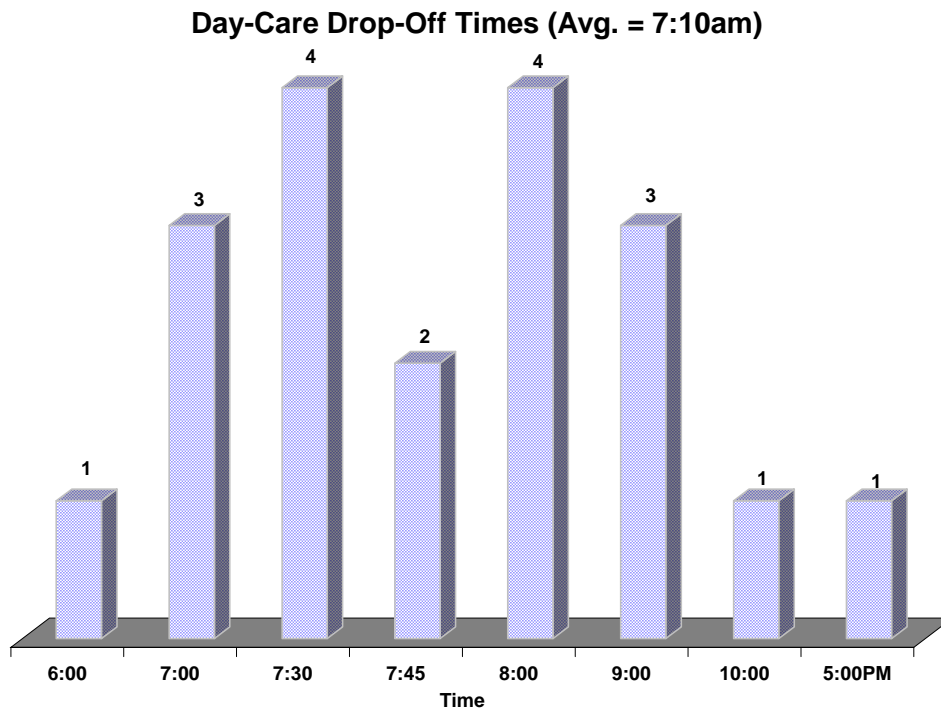
How Often:

18 parents said they require daycare every day, while 5 parents said they require daycare every couple days. In addition, 1 parent said they required care every few weeks and, 3 parents require care about once a month.

1 parent indicated they additionally require weekend care.

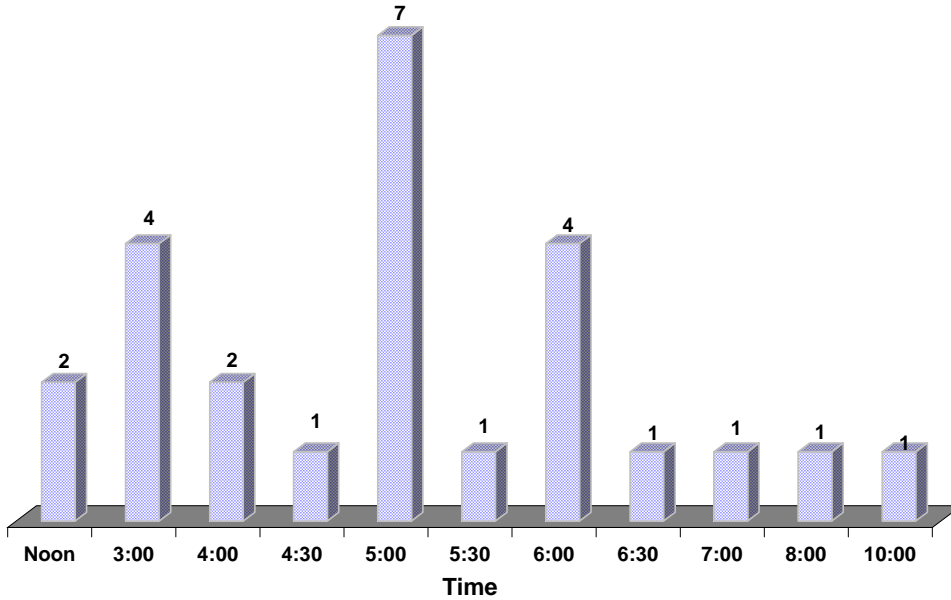
What Times:

Drop-Off: The Average Drop-Off Time was 7.10am. One parent needed care from 5pm to 8pm.



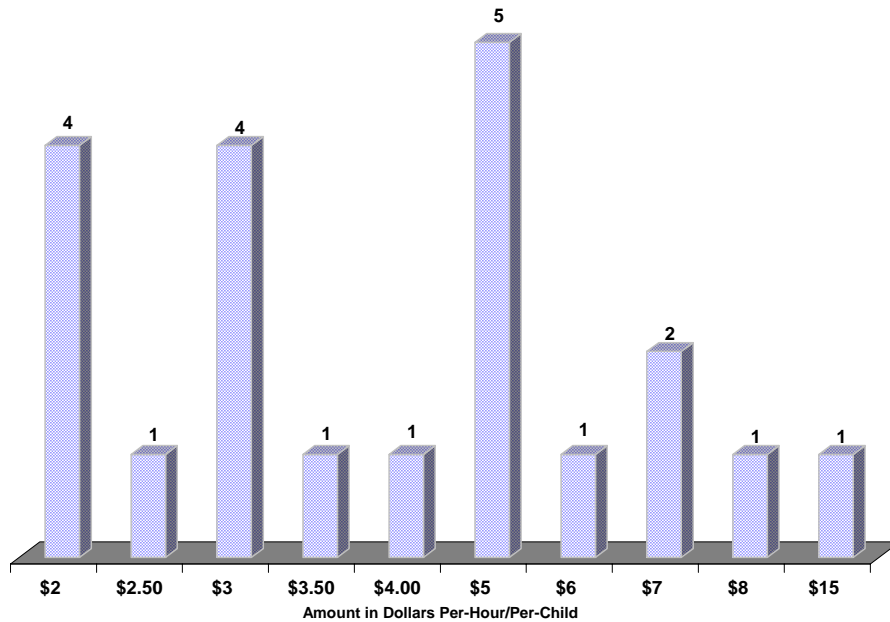
Pick-Up: The average pick-up time was 5:20pm, although about 7% said 6:00pm or later.

Day-Care Pick-Up times (Avg. = 4:40)



How Much? Average Price per child/per hour: \$4.70. 26 (more than half) did not answer the question

Day-Care Price Per-Hour/Per-Child (Avg. = \$4.70)



Currently Enrolled and Satisfied?

13 said they currently have child in day care, 2 of which said they are dissatisfied with current providers. 12 don't have child in day care but indicated they needed care, 2 of which are dissatisfied with current providers.

1 infant child is on a waiting list.

Comments on Day Care:

- ▶ *No childcare available for after school on certain days. The only after-school programs are volunteer programs, ie. Library*
- ▶ *Currently, my daughter attends preschool. The hours are limited, so it would be nice to have a place I can send here for full days. I will probably use the Pinedale Preschool this summer due to the lack of summer programs at the south end of the county.*
- ▶ *We need more day care for us parents who work odd hours or even at a cheaper rate that is affordable to all parents, not just the ones that have more money. Some families have to have both parents working just to afford to live here. We need more after school programs geared to different age groups. We need more summer school programming!*
- ▶ *We need a preschool!!! (La Barge)*
- ▶ *We need a preschool. (La Barge)*
- ▶ *Most of All, Right now we need a preschool program. (La Barge)*

●AFTER SCHOOL●

How Many?

34 parents representing 70 children have or will have a need for after-school programming. 52 children have a need for at the present time, representing about 62% of children represented by the survey effort. The average age of these children is 8 years old. Three children were marked 4 years old, 3 were marked as 5 years old. On the older side, one child was marked as 15 years old, two were marked as 14 years old, and two were marked 13. The rest were between the ages of 6 and 12.

18 children will have a need for after-school in the future. The average age of these children is 3 years 2 months old.

How Often?

17 parents indicated they require after-school care every day, while 10 parents indicated they require after-school care every few days. Additionally, two parents require after-school care once a week, one parent every few weeks, and two parents about once a month. These frequencies are similar to Day-Care, while Summer-School care was more varied.

What Times?

3 parents require both before school and after school programming. The remainder marked after-school only. No parents marked before-school only.

Drop-Off:

Of the three before-school drop-off times, one was at 6:45am while the other was at 7am. that were listed were 5.30am and 7:30am. The rest of the drop-off times were around 3:00pm (after-school) or 4:00pm for students who were enrolled in the hour-long after school program at La Barge.

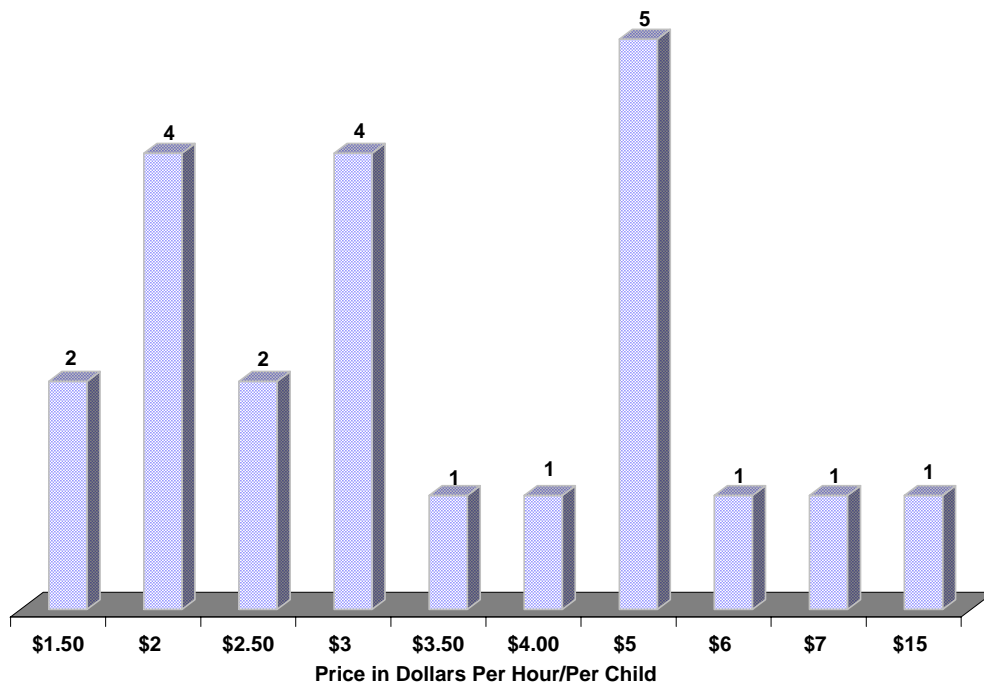
Pick-Up:

The Average after-school pick-up time was 5:20pm. One parent indicated a 5:45pm pick-up time, three parents indicated a 6:00pm pick-up time, and one parent indicated an 8:30pm pick up time.

How Much are they willing to afford?

Average per-child/per-hour cost for after school programming was \$4.00. Although some parents indicated a willingness to pay much higher prices.

After-School Price - Per Hour/Per Child (Avg. = \$4.00)



How many are currently enrolled and are satisfied?

6 parents have children in the summer-school program now, 3 of which were in La Barge, and 3 in Big Piney. 1 of which is dissatisfied. 27 don't have a child enrolled right now, 5 of which are dissatisfied.

Comments on After School:

- ▶ *No childcare available for after school on certain days. The only after-school program are volunteer programs, ie. Library*
- ▶ *The lack of after school programs make me rely too much on family and friends. We need a summers school program in BP*
- ▶ *We need more day care for us parents who work odd hours or even at a cheaper rate that is affordable to all parents, not just the ones that have more money. Some families have to have*

both parents working just to afford to live here. We need more after school programs geared to different age groups. We need more summer school programming!

▶ *I'd like to see a variety of programs for elementary and middle school kids especially things like art class, adventure camp, music, physical ed (karate, gymnastics). Not necessarily for people who need daycare but for kids who need enrichment.*

▶ *Although my child does not require after school care, I do believe there is a huge need for a program like this. I know there are a lot of children that have no one to care for them after school or during the summer. And some children are at the age where a summer program would benefit them much more than a babysitter.*

▶ *The current childcare is not qualified enough for me. Price of after school or summer school would depend on the quality of the program. We are mostly concerned about the child care*

▶ *It would be nice to see parents being able to prioritize their life. If we choose to have kids then we are saying they will come first, but nowadays it seems the kids are getting to be "their own boss" because parents are too busy trying to make a living. It is nice to see somebody doing something to get our kids safe and maybe even get back to more traditional family styles. The world is so busy we need some quiet somewhere and it needs to start with family and this "new age" of kids.*

▶ *We need to have after school and summer school programs!*

▶ *Some of us have our children in an after school program until 4, But we need care for between 4 and when we get off of work.*

●SUMMER SCHOOL●

How Many?

29 parents representing 57 children have or will have a need for summer time youth programming. 44 Children currently have a need for Summer School. The average age of these children is 6.7 years old. 13 Children will have a need for Summer School in the future. The average age of these children is 2.8

How often?

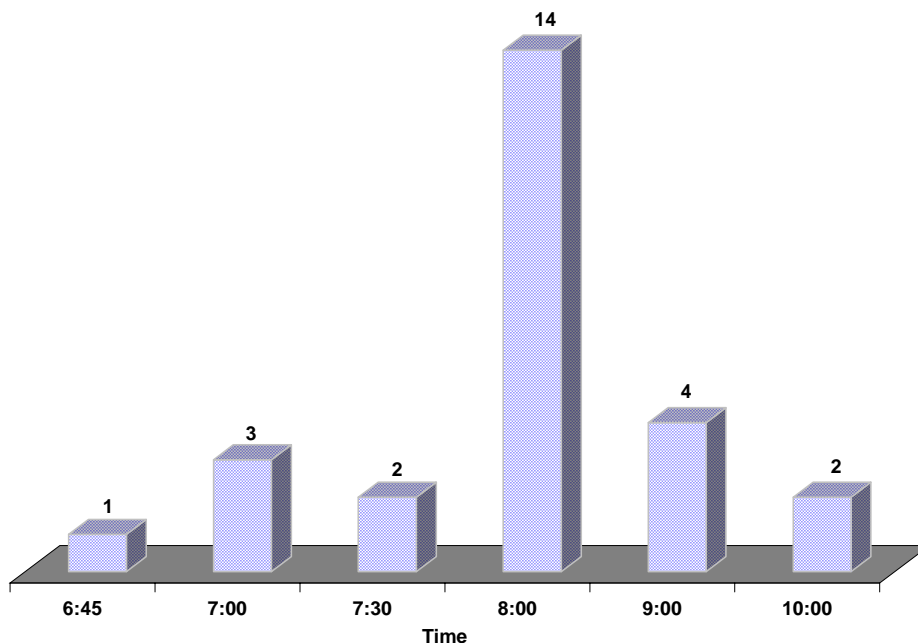
Responses indicated a slightly wider variation in number of days needed for Summer School:

11 parents said they have a need for Summer-School care every day
10 parents said they have a need for Summer-School care every few days
3 parents said they have a need for Summer-School care once a week
2 parents said they have a need for Summer-School care once every few weeks
1 parents said they have a need for Summer-School care once a month
2 parents said they have a need for Summer-School care every few months.

What Times?

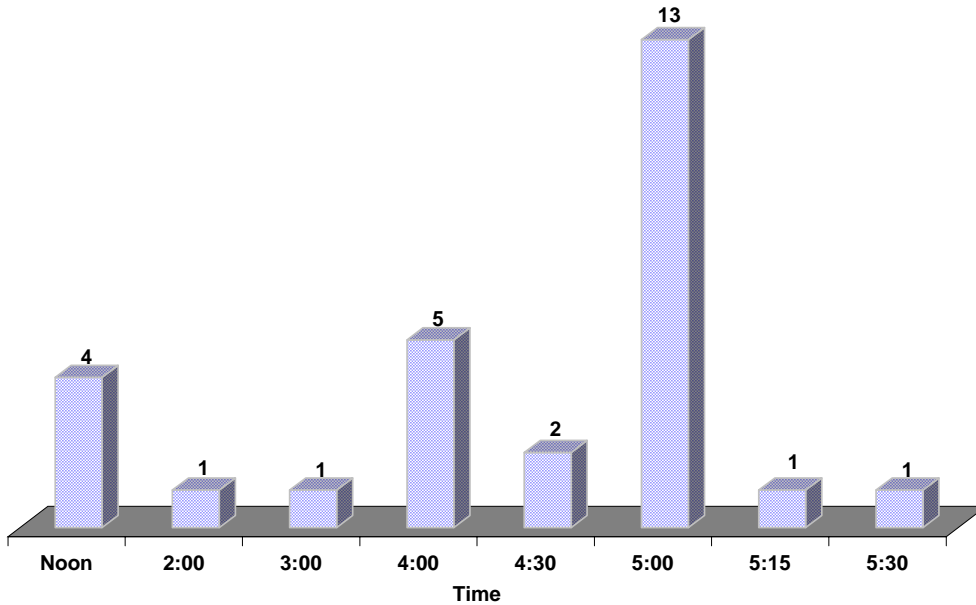
Drop-Off: Average drop-off time was 7:40am. The earliest time was 6:45am. The drop-times were also slightly more varied than day-care or after-school

Summer-School Drop-Off Times (Avg. = 7:40am)



Pick-up: Average pick-up time was about 5:00pm. About 20% indicated a need for 5:30pm or later. Pick-up times were likewise slightly more varied.

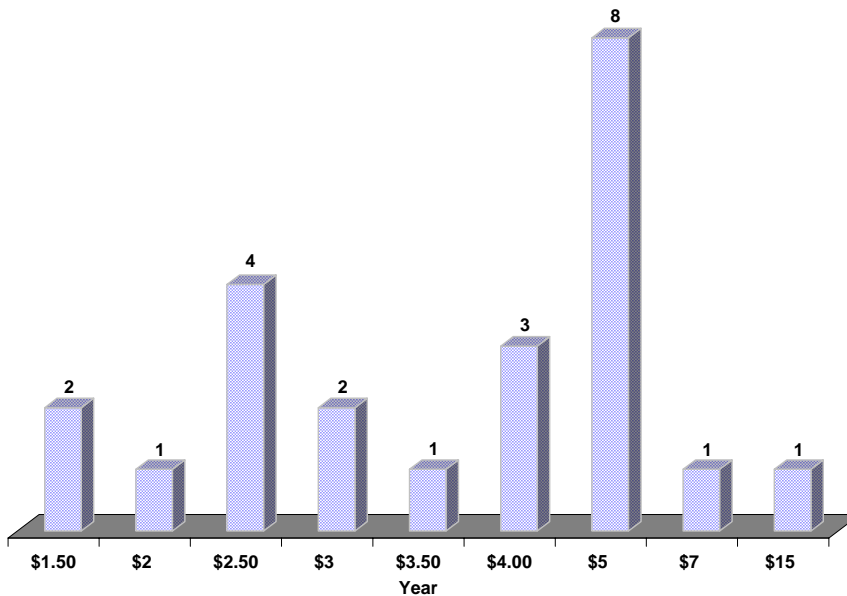
Summer-School Pick-Up Times
(Avg. = 4:45pm - Not counting Noon pick-ups)



How much are they willing to afford?

Average Price per-child/per-hour was \$4.23.

Summer-School Prices Per-hour/Per-child (Avg. = \$4.23)



Are they currently enrolled and are they satisfied?

5 parents said they currently have children enrolled in summer-school, 1 of which is dissatisfied.

24 parents currently do not have children enrolled in summer school, 7 of which are dissatisfied.

Comments on the Summer Programming:

- ▶ *No childcare available for after school on certain days. The only after-school program are volunteer programs, ie. Library*
- ▶ *I would like to see the county Rec Dept. offer Summer activities for kids - Uinta county provides a variety of adventure camps - Monday through Thursday for \$40 dollars per week, just 4 hours a day, all through the summer.*
- ▶ *Currently, My daughter attends preschool. The hours are limited, so it would be nice to have a place I can send here for full days. I will probably use the Pinedale Preschool this summer due to the lack of summer programs at the south end of the county.*
- ▶ *The lack of after school programs make me rely too much on family and friends. We need a summers school program in BP*
- ▶ *We need more day care for us parents who work odd hours or even at a cheaper rate that is affordable to all parents, not just the ones that have more money. Some families have to have both parents working just to afford to live here. We need more after school programs geared to different age groups. We need more summer school programming!*
- ▶ *I'd like to see a variety of programs for elementary and middle school kids especially things like art class, adventure camp, music, physical ed (karate, gymnastics). Not necessarily for people who need daycare but for kids who need enrichment.*
- ▶ *We need summer time daycare programs.*
- ▶ *Although my child does not require after school care, I do believe there is a huge need for a program like this. I know there are a lot of children that have no one to care for them after school or during the summer. And some children are at the age where a summer program would benefit them much more than a babysitter.*
- ▶ *The current childcare is not qualified enough for me. Price of after school or summer school would depend on the quality of the program. We are mostly concerned about the child care*
- ▶ *We need to have after school and summer school programs!*

● **SUBLETTE COUNTY CHILD CARE SURVEY** ●
-PINEDALE-

A NOTE ON THE METHODOLOGY:

Surveys were distributed to all of the child care providers in the county, as well as distributed via the Pinedale Elementary and Middle Schools. The schools in Big Piney have not allowed a survey to be distributed in their schools thus far. Distribution options for Big Piney-Marbleton are being considered, but at this time the vast majority of responses are from the Pinedale area.

As of April 23, 2007, 119 surveys have been returned, representing 226 children. The average age of the children was 5.54. Only a small handful of returned surveys indicated no need for any of the programs, and so were not included in the results. While the results cannot provide a picture of what percentage of the total population requires child care, the results are likely to be representative of what types, times, and prices are needed across all children requiring care.

About 40 respondents wrote additional comments on the surveys.

GENERAL FINDINGS:

Continuing Need:

The results showed a continuing strong need for Day Care, After-School Care, and Summer Time care. The greatest need based on numbers of children is Summer programming, with 62% of children requiring this service. However based on levels of dissatisfaction and the tone of comments received, Day Care is perhaps the most pressing need at the moment. After-School and especially Summer Time programming showed the strongest future need (likely because many parents require day care soon after their children are born). Many of the comments received noted a need for more child care providers. In terms of sheer numbers of students represented, Summer care was the greatest need among these students

Parents indicated that Day-Care and After-School care was a daily or almost daily requirement, often requiring the full day, while Summer-School programming was somewhat more infrequent and with varying drop-off and pick-up times.

Pinedale

Current Need			Future Need		
Program	Children	% of all Children	Program	Children	% of all Children
Day Care	92	40.71%	Day Care	7	3.10%
After School	71	31.42%	After School	51	22.57%
Summer Program	118	52.21%	Summer Program	33	14.60%

More Diversity:

Along with more providers, the results showed a need for more diversity in types of Day Care offered and especially what times of day child care is available. A need for earlier times of operation was prevalent and consistent with earlier hours typically worked by natural gas trades. A sizable population of parents requires child care either before or after the times of day most providers operate. A number of comments noted that Parents have taken advantage of expanded hours of operation in other locales, but cannot find the same after moving to Pinedale.

In addition, a number of parents indicated they would be willing to pay more than what most providers currently charge - creating a possible demand for "high-end" providers that could alleviate pressure from others that charge less.

Satisfied with Quality, but not Quantity:

Most respondents indicated that they were generally satisfied with the current child care programs - however, many indicated that there is a shortage of programs and that many care providers are overworked and overwhelmed. Many commenters indicated that they felt the problem will get worse as the community continues to grow.

The highest level of dissatisfaction occurred with the Day-Care programs, with about 17% indicating dissatisfaction. After-School and Summer-School programs had lower levels of dissatisfaction, although a larger number of respondents did not answer the question in this category.

●DAY CARE●

How Many:

92 children were marked as having a need for day care at the present time, or about 40% of all the children represented by the survey effort. The average age of these children is 3 years old. There was 5 children under 1 year old, (with the youngest being 3 months old) that were marked as currently needing daycare, as well as 4 children marked as one years old and currently needing care. On the older side, there were 5 children marked as currently needing day care who were 5 years old, and one child that was six years old. The rest of the children were between 2 and 4.

7 children will have a need for day care in the future. It is likely that this number is small because children often require day-care soon after birth. The average age of these children is 1 Year 4 Months old.

How Often:

58 parents said they require daycare every day, while 23 parents said they require daycare every couple days. In addition, 1 parent said they required care once a week, 1 parent requires care every few weeks, and 1 parent requires care once a month

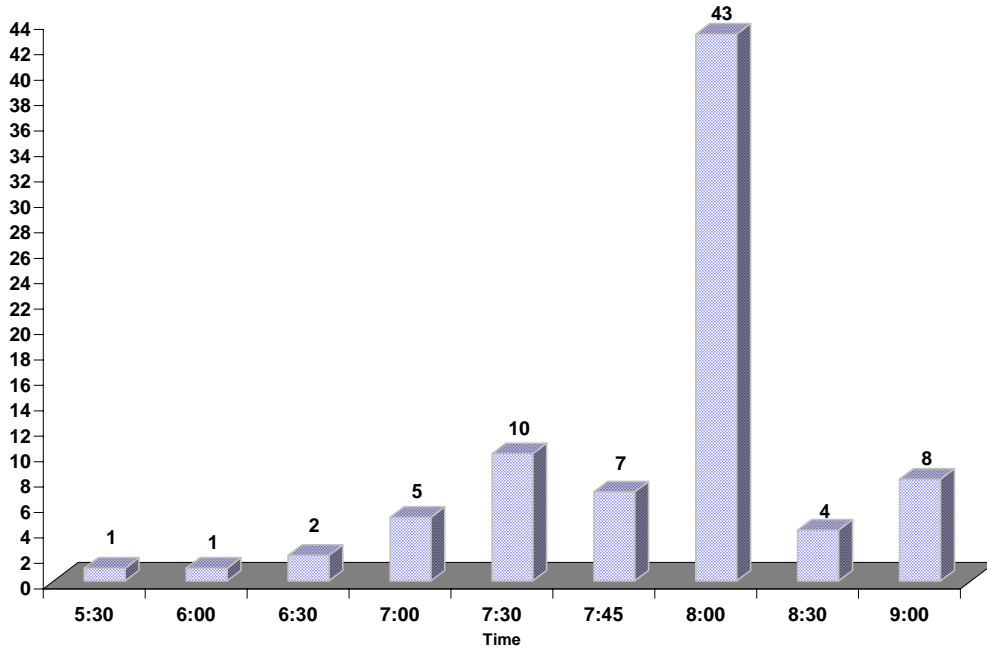
3 parents said they additionally require weekend care - which is about 3.5% of the parents needing daycare.

What Times:

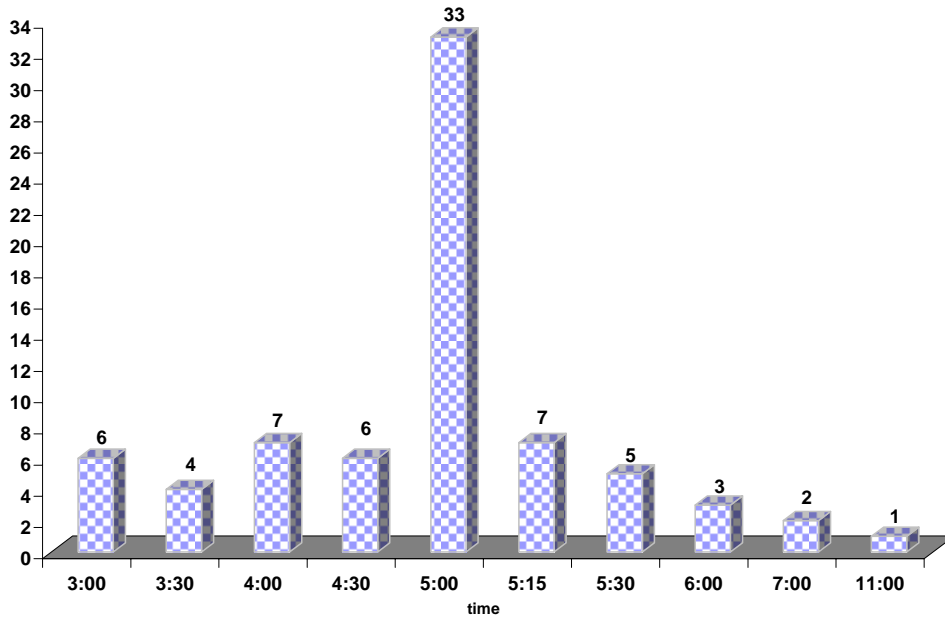
Drop-Off: The Average Drop-Off Time was 7.50am, although about 24% of respondents marked 7:30am or before. About 12% marked before 7:00am, with one parent marking 5:30am.

Pick-Up: The average pick-up time was 5:20pm, although about 7% said 6:00pm or later.

Day-Care Drop-Off Times (Avg. = 7:50am)

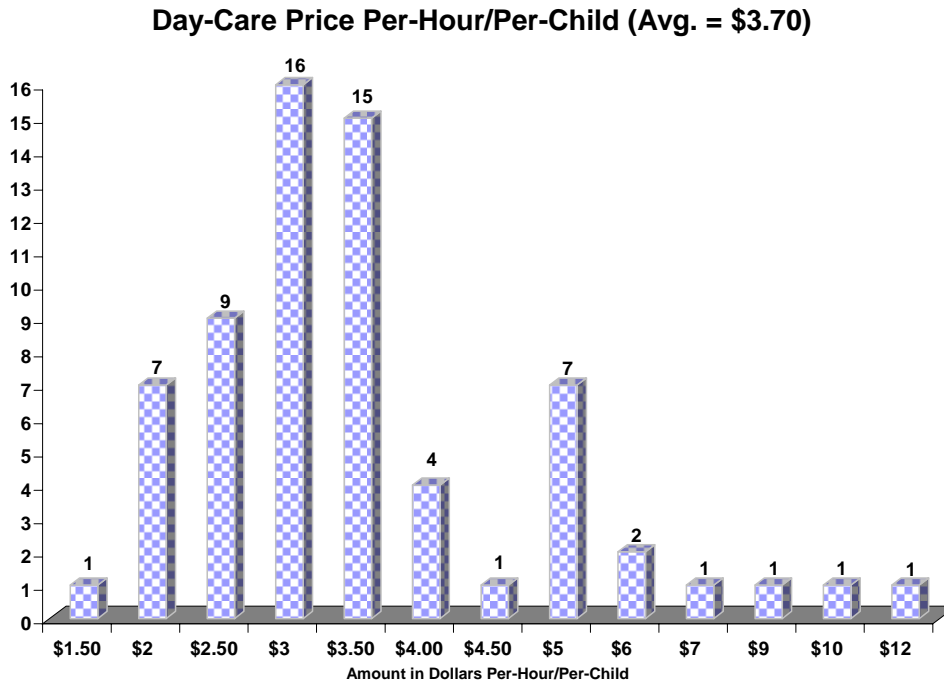


Day-Care Pick-Up times (Avg. = 5:20)



How Much?

Average Price per child/per hour: \$3.70. 20 did not answer the question



Currently Enrolled and Satisfied?

63 said they currently have child in day care, 7 of which said they are dissatisfied. 12 don't have child in day care, 2 of which are dissatisfied.

8 are on a waiting list (about 10%), 2 of which are dissatisfied.

Satisfaction Totals: 57 Satisfied - 11 dissatisfied. 15 did not answer the question. Day-care showed the largest level of dissatisfaction (about 16%).

Comments On Day Care:

- ▶ *not satisfied with day care): Laziness- Cleanliness, Activities, and food.*
- ▶ *Day Care: Satisfied, but room for improvement. Would like to be able to select daycare provider instead of them selecting my children.*
- ▶ *Will pay whatever they charge*
- ▶ *There is a need obviously for more child day care programs that are similar to Discovery, Pinedale preschool + the learning center. Private day care is good as long as they have a license and have the required maximum children to provider ratio. If the ratio exceeds children*

to provider (which you find happening in Sublette County) the quality of childcare is diminished. For these reasons, continued support for the Sublette County Childcare Coalition's initiatives is crucial to provide positive environments and early education for our growing population. The most important time of these children's lives As the trend of the two household incomes (necessary to afford living in Sublette County) continues, childcare is and should be the number one priority for our community. Sincerely, Serese Kudar

- ▶ *We can't afford our infant daycare - we have to pay for fulltime even if we work half time.*
- ▶ *My oldest child will enter kindergarten in 2 yrs + will need after school care + summer care. My youngest is in a home care situation but she may not provide next year - so am on a waiting list as well. Thank you for your attention + care for this important component of our community.*
- ▶ *My child is currently enrolled at the Pinedale Preschool + we are very happy with him there - however - before he was able to attend - there were very few options for child care and of the few - we were always on a waiting list. Having an available summer program would be great - just so my only child could be out with his friends from school and other children his own age.*
- ▶ *My four month old has been on the waiting list for 13 months (since I found out I was pregnant) and my provider will not have room for him until Dec. 2007 that is 10 more months. Infant/toddler spaces are the greatest need, but I work at the preschool and we have a waiting list of over 40 children for the 2007-2008 school year. Preschool age spaces will be a problem next year. People call all the time that I have to turn away.*
- ▶ *Children's Discovery Center: I am generally satisfied with the pre-school/after-school program at the facility my kids attend. However, over the last two years the program has shifted, to meet demand, from pre-school program to childcare for younger children. The number of children has also increased, almost double. My concerns are that the facility was not designed to comfortably accommodate this change and that the quality of employees available for hire has started to diminish the wonderfully enriching program/environment. Everyone is doing their best given the influx of people in recent years, of this I am certain.*
- ▶ *When our kids are too old for day care we are going to need some kind of program for summer care (all summer) not just a few weeks this is not just my problem but a lot of parents are facing the same issue. There are a lot of kids who are too old for day care but too young to stay home by themselves. We and a lot of other people in town have no family in town and it's going to become a Big Problem leading to kids running the streets with nothing to do and no where to go. I moved from a large city to here and worked in the school system there. I know the Problems. Thanks. P.S. Pinedale is growing and problems will grow with it. Unsupervised kids leads to theft, vandalism, drugs, and a whole list of other problems. Lets solve this before it starts.*
- ▶ *We need more quality child care in Pinedale for ages 0 -12*

► *Day Care: I am satisfied but there is not enough to go around. I am still looking for day care for my 10mo old.*

► *I require some weekend care*

► *We have great day care providers in the area, however, we could always use more qualified + licensed day care providers, to be able to take kids when our current providers are sick, going on vacation, closing for whatever reason. Julie had surgery + was closed only 3 days, luckily I have family in the area to take care of my child, however another daycare provider was out for 6 weeks due to illness/surgery + parents were struggling on where to take their kids. Another daycare provider is closing for one month to move + those parents are scrambling to find daycare. More funding would be helpful to current providers for possibly hiring staff to assist them or for new providers to get their business up + running. The more staff being hired would allow providers to increase the # of kids to comply with ratios. This would serve, in turn, to benefit the community.*

► *There are not enough child care providers providing care for flexible + after hours. I found a great daycare/pre-school but I need to sometimes drop off as early as 6am + I may need to stay as late as 8pm + sometimes weekends. There has been nothing I can find to accommodate this. Being a single mom, new to the area I have no family or friends to help with the extra slack. The oil and gas industry can be demanding of hours at times + less demanding at other so a flexible affordable daycare is really desired!*

► *I am satisfied with MY current provider - Just not enough for other Parents to enter work force. (Pre) 4K Co-Op Program: Based out of school; one teacher certified/Coordinator + Parent Volunteers to help subsidize costs. 1-2 days per Mo. In classroom - Employers would sacrifice this time to allow workers rest of month. AM: Educational - Into Reg. K. Lunch. Nap. Organized Play Stations/Areas: Art/Craft-take home. Science. Shapes/Math. Colors. Alphabet. Pretend Play. Story Time! Music. Gym. * Same stuff as K but geared toward age + ability of 4 yr olds. * Make learning fun same as summer program.*

► *Not satisfied with day care because I can't find anyone for under 2. I think the after-school program is expensive. My children go to summer school for the activities, not because they need to.*

► *There isn't the space or staff at Discovery as it currently exists to handle the influx of energized kids after school. There becomes such a huge amount of kids who are widely ranged in age that it is quite chaotic. As an adult, I find it overwhelming, I can't imagine how a 2-3 year old feels. The staff does it's best considering the situation.*

► *Not enough day care providers*

► *I cannot afford after-school due to expensive day care for 1yr old*

► *We need programs for parents who work early*

- ▶ *Most childcare providers are not reliable, they do not like my hrs of work*

- ▶ *Childcare: We love our childcare provider but are not sure what we will do next year when she quits. After school: I love what I see in the current elementary After School program. It needs to be better supported by the school and district. Summer: I have loved the past elementary program. It was so enriching and extended my child's learning*

- ▶ *I am satisfied with the quality of child care, but am not satisfied with the quantity of child care*

●AFTER SCHOOL●

How Many?

71 children have a need for After-School at the present time. The average age of these children is 7 years old. Two children were marked as 3 years old, 4 were marked as 4 years old, 8 were marked as 5 years old. On the older side, one child was marked as 12 years old, 4 were marked as 11 years old, and 7 were marked as 10 years old. The rest were between the ages of 6 and 9.

53 children will have a need for after-school in the future. The average age of these children is 3 years 2 months old.

How Often?

45 parents indicated they require after-school care every day, while 28 parents indicated they require after-school care every few days. Additionally, one parent requires after-school care once a week, and one parent every few months. These frequencies are similar to Day-Care, while Summer-School care was more varied.

What Times?

5 parents require both before school and after school/ the rest marked after-school only. No parents marked before-school only.

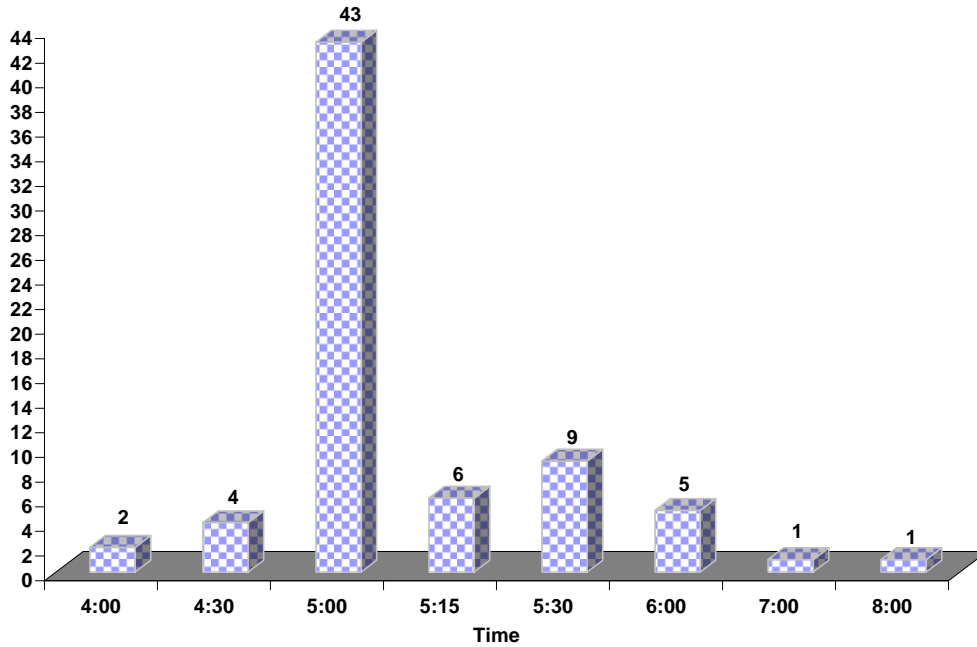
Drop-Off:

The only two before-school drop-off times that were listed were 5.30am and 7:30am. The rest of the drop-off times were 3:00pm (after-school).

Pick-Up:

The Average after-school pick-up time was 5:15pm. 11% said they required pick-up times after 6:00pm.

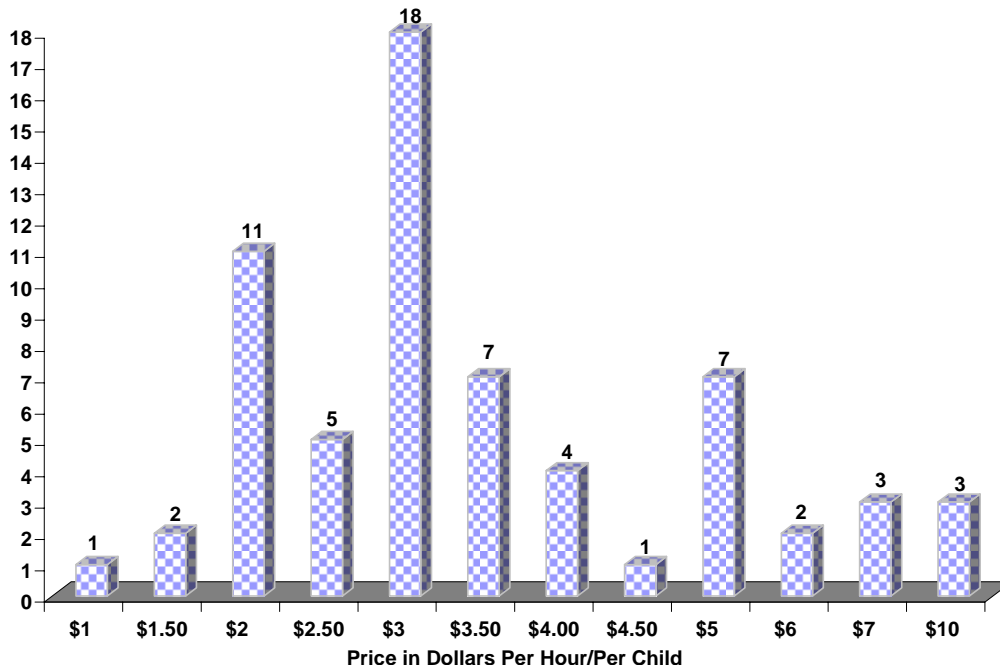
After-School Pick-Up Times (Avg. = 5:15pm)



How Much are they willing to afford?

Average per-child/per-hour cost: \$3.60. Although some parents indicated a

After-School Price - Per Hour/Per Child (Avg. = \$3.60)



willingness to pay much higher prices.

How many are currently enrolled and are satisfied?

32 parents have children in the summer-school program now, 1 of which is dissatisfied. 45 don't have a child enrolled right now, 4 of which are dissatisfied.

Satisfaction Totals: 31 satisfied – 5 dissatisfied (about 13%). 41 did not answer the question.

Comments:

- ▶ *After School program should be housed in the school. There is plenty of space, it seems to me people need to learn to share. That's what they tell the kids!*
- ▶ *There isn't any other than school sports. No Variety? Not consistent*
- ▶ *We need programs for parents who work early*
- ▶ *Pinedale needs childcare that is open over spring break and other school holidays. It is hard to find child care during those times. Mot parents can't takeoff every time the school is closed (Christmas break, insv days, etc)*
- ▶ *We love the after-school program*
- ▶ *We need more variety - our last school provided an "after hours" program called "extended hours". They had a before and after school program 6am to start of school day and then from school end to 6pm. They used a flat rate for every 1/2 hour used (ie. \$5/3:00-3:29; \$10/3:30-4:00 etc) You singed your child out and marked the time for billing. Extended hours had games and activities and even snacks for the kids. They had a couple off staff people there. It was a great program for parents who worked hours outside the 8-3 school day.*
- ▶ *Childcare: We love our childcare provider but are not sure what we will do next year when she quits. After school: I love what I see in the current elementary After School program. It needs to be better supported by the school and district. Summer: I have loved the past elementary program. It was so enriching and extended my child's learning*
- ▶ *It would be nice if the after school program had a place of its own. Inside the school. The school dist. #1 should provide before + after school care. They should be able to help cover cost or at least house the program.*

●SUMMER SCHOOL●

How Many?

118 Children have a need for Summer School. The average age of these children is 6.5 years old.

49 Children will have a need for Summer School in the future. The average age of these children is 3.5.

How often?

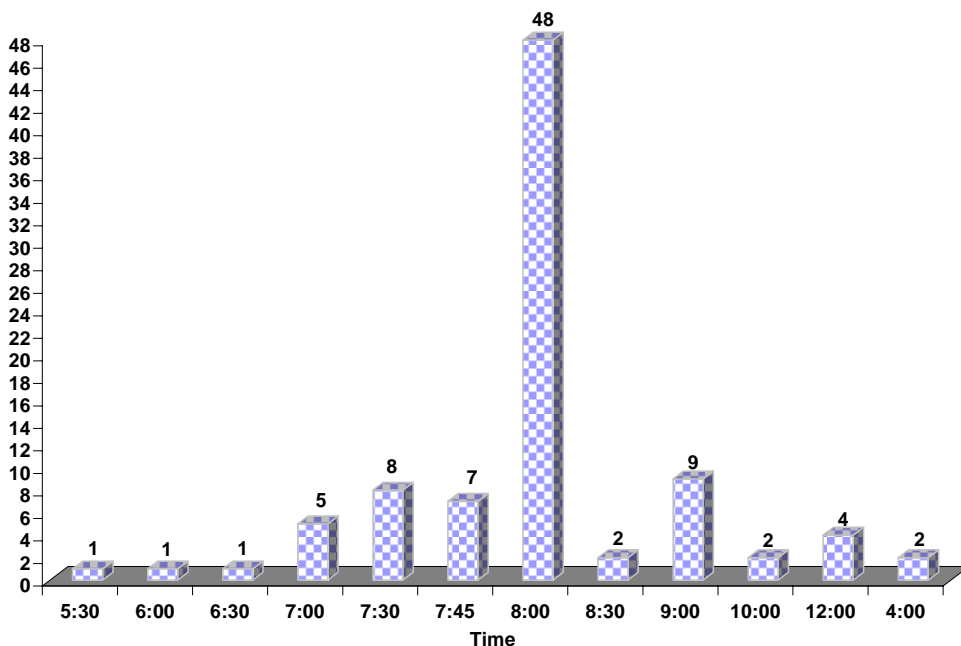
Responses indicated a slightly wider variation in number of days needed for Summer School:

- 51 parents said they have a need for Summer-School care every day
- 37 parents said they have a need for Summer-School care every few days
- 4 parents said they have a need for Summer-School care once a week
- 0 parents said they have a need for Summer-School care once every few weeks
- 3 parents said they have a need for Summer-School care once a month

What Times?

Drop-Off: Average drop-off time was 8:00am. 18% indicated a need for 7:30 or earlier. The drop-times were also slightly more varied than day-care or after-

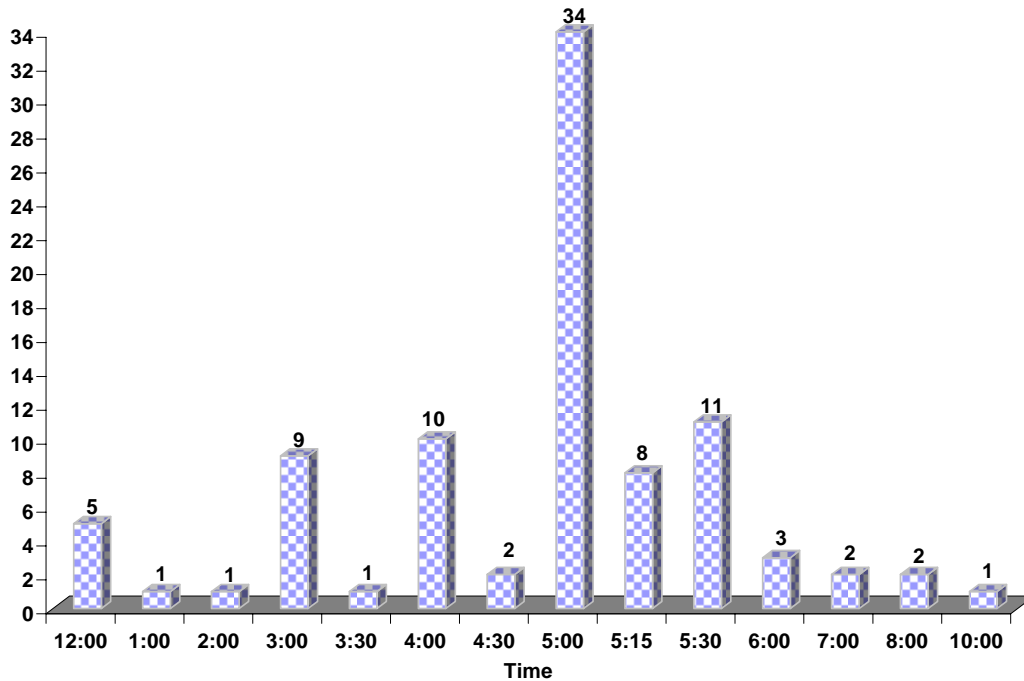
Summer-School Drop-Off Times (Avg. = 8:00am)



school care.

Pick-up: Average pick-up time was about 5:00pm. About 20% indicated a need for 5:30pm or later. Pick-up times were likewise slightly more varied.

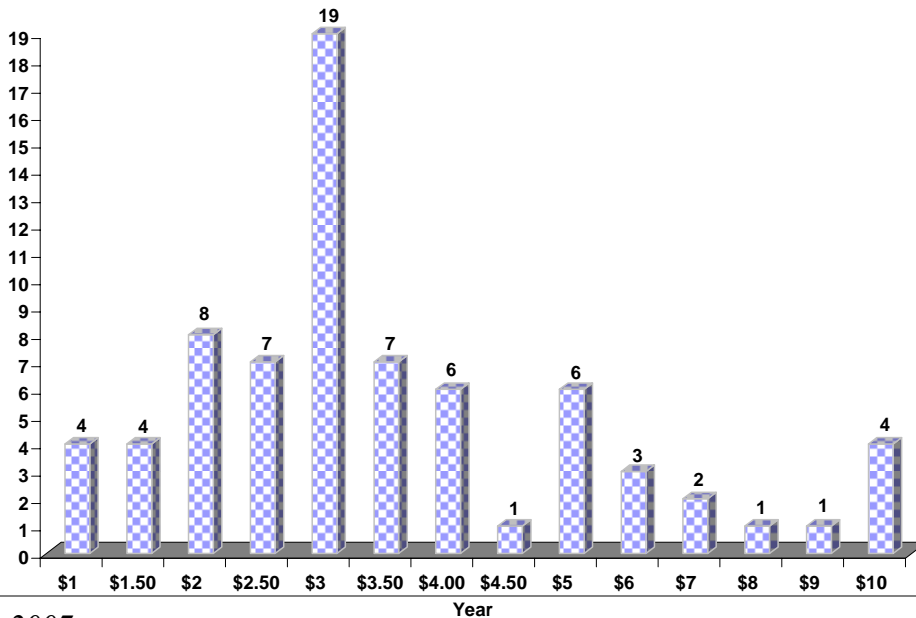
Summer-School Pick-Up Times (Avg. = 5:00pm)



How much are they willing to afford?

Average Price per-child/per-hour was \$3.60.

Summer-School Prices Per-hour/Per-child (Avg. = \$3.60)



Are they currently enrolled and are they satisfied?

44 parents currently have children enrolled in summer-school, 2 of which are dissatisfied

51 Parents currently do not have children enrolled in summer school, 2 of which are dissatisfied.

Satisfaction Totals: 37 were satisfied, 4 were not-satisfied. 49 did not answer.

Comments on Summer Programming:

▶ *Summer School Program: More reading, writing, math etc to strengthen the child's skills, especially reading + writing.*

▶ *Summer Day Camp at White Pine was great - but we could not afford it for 2 children*

▶ *As I wrote on my other child's paper, I will have a large need for summer care when they are too old for Day Care but too young to stay home by themselves. I know I am not alone in this. Pinedale in growing and child care for older kids is a growing need. I know Parents now who can not work and need to because they have no one to watch their kids in summer. There are so many businesses in town who would profit with more people to hire if they could find good quality care for their children. Plus those kids who are left to their own devices because their parents must work and have no choice. Pinedale Summer School Program: More reading, writing, math etc to strengthen the child's skills, especially reading + writing.*

▶ *Summer Day Camp at White Pine was great - but we could not afford it for 2 children*

▶ *As I wrote on my other child's paper, I will have a large need for summer care when they are too old for Day Care but too young to stay home by themselves. I know I am not alone in this. Pinedale in growing and child care for older kids is a growing need. I know Parents now who can not work and need to because they have no one to watch their kids in summer. There are so many businesses in town who would profit with more people to hire if they could find good quality care for their children. Plus those kids who are left to their own devices because their parents must work and have no choice. Pinedale is growing and problems will grow with it when kids are left to run the streets unsupervised. Thanks.*

▶ *I am satisfied, but just need something for ages older than kindergarten*

▶ *There is not enough of a variety for the children's daily activities. The county has money to provide day camps for the children w/ swimming, basketball, tennis (we need courts), soccer, karate, baseball, etc. .. Just look at what Jackson's rec board provides for their youth. There is nothing in this community. The White Pine camp is a disgrace with dangerous, untrained counselors. There aren't even matinees for the summer months. Thank goodness for the excellent summer school program and JJ's pool hours.*

▶ *I am willing to pay more, 4 or 5 dollars, for a program with enriching activities such as nature hikes, fishing, swimming, and lots of active outdoor time.*

- ▶ *We need programs for parents who work early*
- ▶ *Kids have a safe environment while I work*
- ▶ *The summer school program is a great learning experience for the kids as is the after school program. Keep it up.*
- ▶ *Summer School: If this is public summer school same as last do we still have to pay? Maybe I am misunderstanding this survey. Is this for summer school or day care? I would like to enroll my children in the summer school program but I cannot pay for it if it is public school. Thank you. Karin Danze*
- ▶ *Childcare: We love our childcare provider but are not sure what we will do next year when she quits. After school: I love what I see in the current elementary After School program. It needs to be better supported by the school and district. Summer: I have loved the past elementary program. It was so enriching and extended my child's learning le is growing and problems will grow with it when kids are left to run the streets unsupervised. Thanks.*
- ▶ *I am satisfied, but just need something for ages older than kindergarten*
- ▶ *There is not enough off a variety for the children's daily activities. The county has money to provide day camps for the children w/ swimming, basketball, tennis (we need courts), soccer, karate, baseball, etc. .. Just look at what Jackson's rec board provides for their youth. There is nothing in this community. The White Pine camp is a disgrace with dangerous, untrained counselors. There aren't even matinees for the summer months. Thank goodness for the excellent summer school program and JJ's pool hours.*
- ▶ *I am willing to pay more, 4 or 5 dollars, for a program with enriching activities such as nature hikes, fishing, swimming, and lots of active outdoor time.*
- ▶ *We need programs for parents who work early*
- ▶ *Kids have a safe environment while I work*
- ▶ *The summer school program is a great learning experience for the kids as is the after school program. Keep it up.*
- ▶ *Summer School: If this is public summer school same as last do we still have to pay? Maybe I am misunderstanding this survey. Is this for summer school or day care? I would like to enroll my children in the summer school program but I cannot pay for it if it is public school. Thank you. Karin Danze*
- ▶ *Childcare: We love our childcare provider but are not sure what we will do next year when she quits. After school: I love what I see in the current elementary After School program. It*

needs to be better supported by the school and district. Summer: I have loved the past elementary program. It was so enriching and extended my child's learning